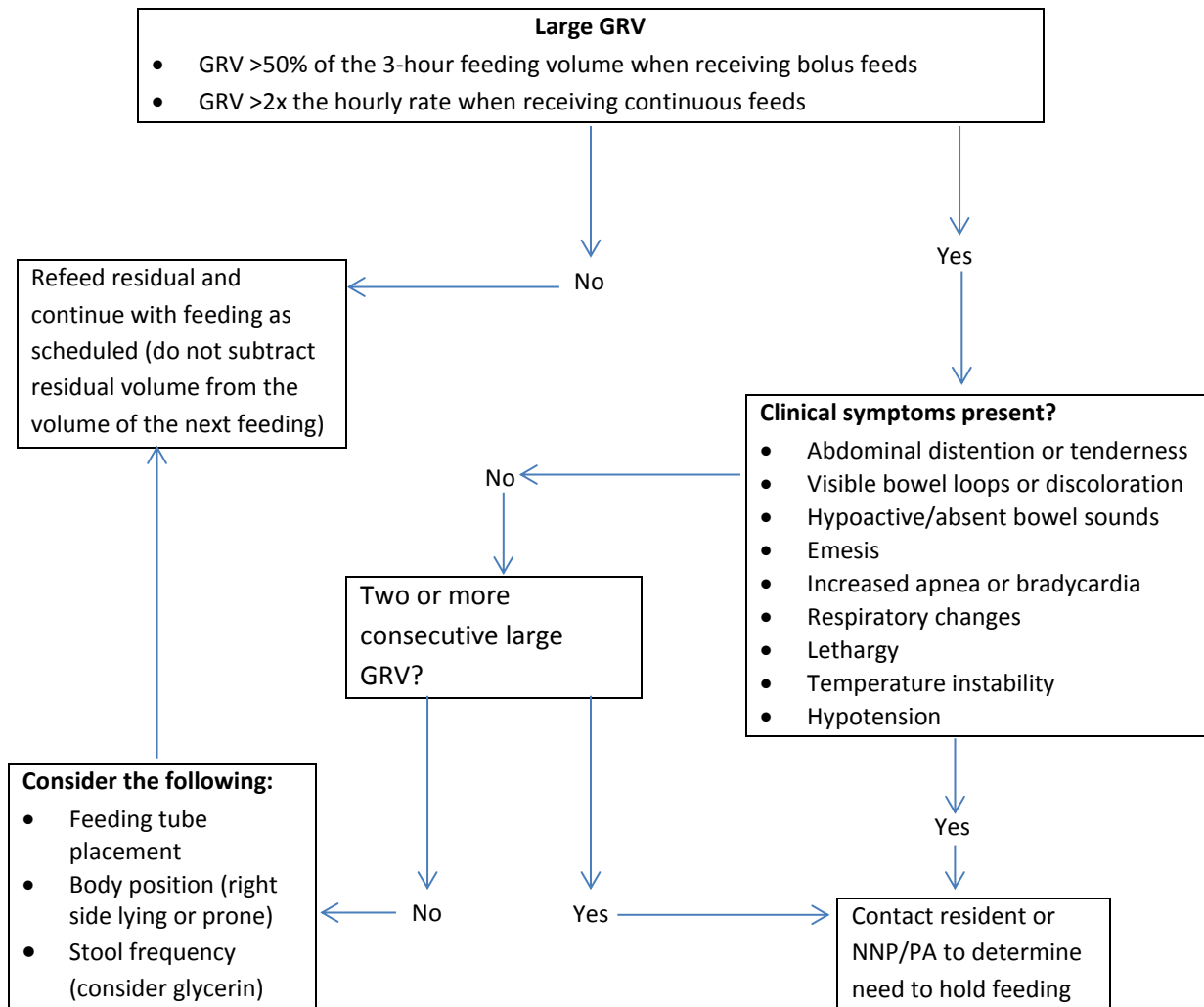


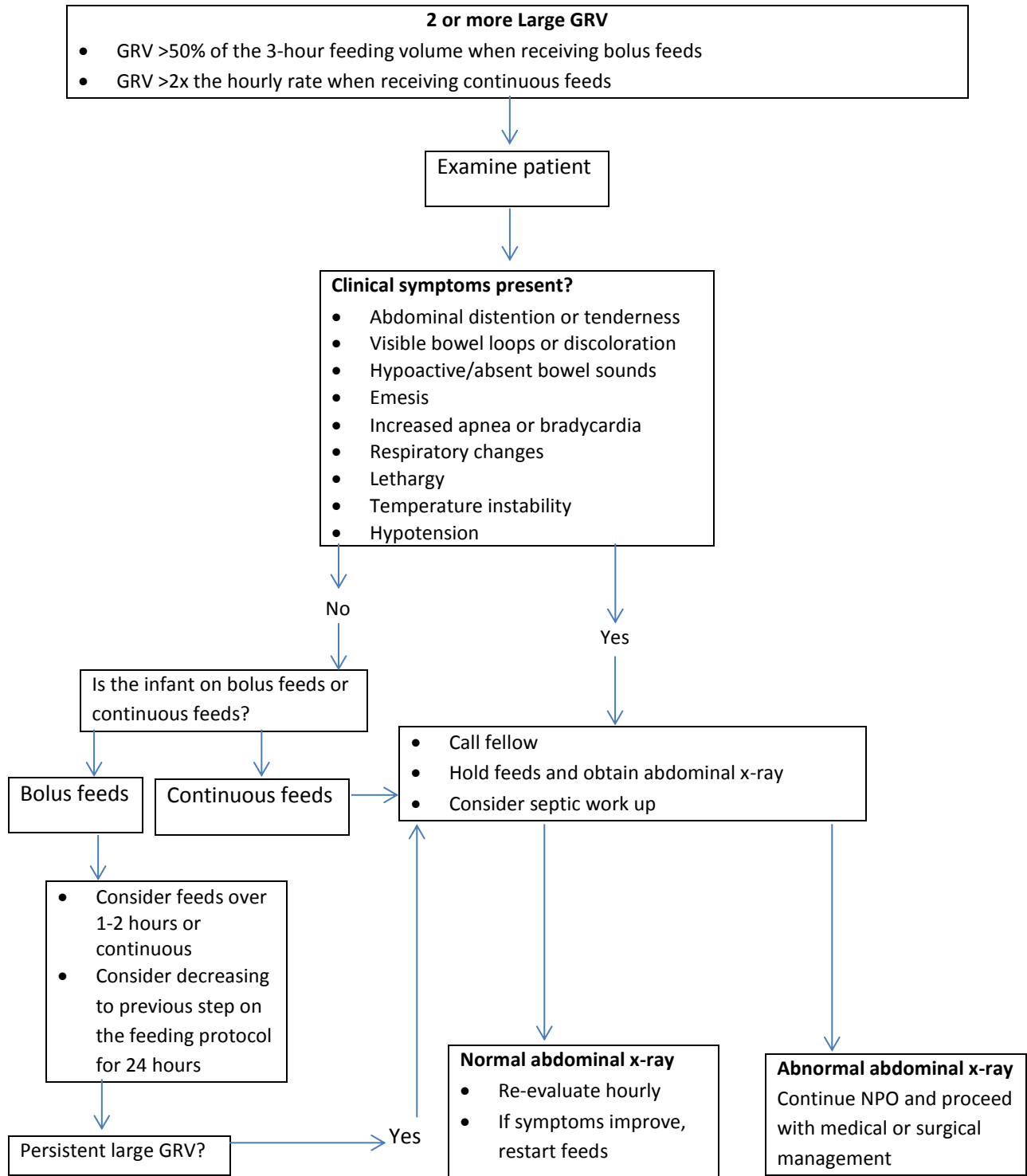
Feeding Tolerance Algorithm for Nursing

- Gastric residual volumes (GRV) should be checked every 3 hours for infants receiving bolus feeds and every 4 hours for infants receiving continuous feeds.
- GRVs should not be checked for infants receiving post-pyloric feeds.
- Please note that gastric residuals up to 2x or more of the feeding volume may be normal when receiving trophic feeds or while feeds are advancing to goal.
- Notify the resident or NNP/PA immediately if the infant shows any of the following signs:
 - Bloody or bilious residuals/emesis*
 - Bloody stools

*If gastric residuals are slightly green or yellow tinged, consider mechanical issues such as the gastric tube at or beyond the pyloric sphincter.



Feeding Tolerance Algorithm for MDs & NNP/PAs



*Please note that gastric residuals up to 2x or more of the feeding volume may be normal when receiving trophic feeds or while feeds are advancing to goal.